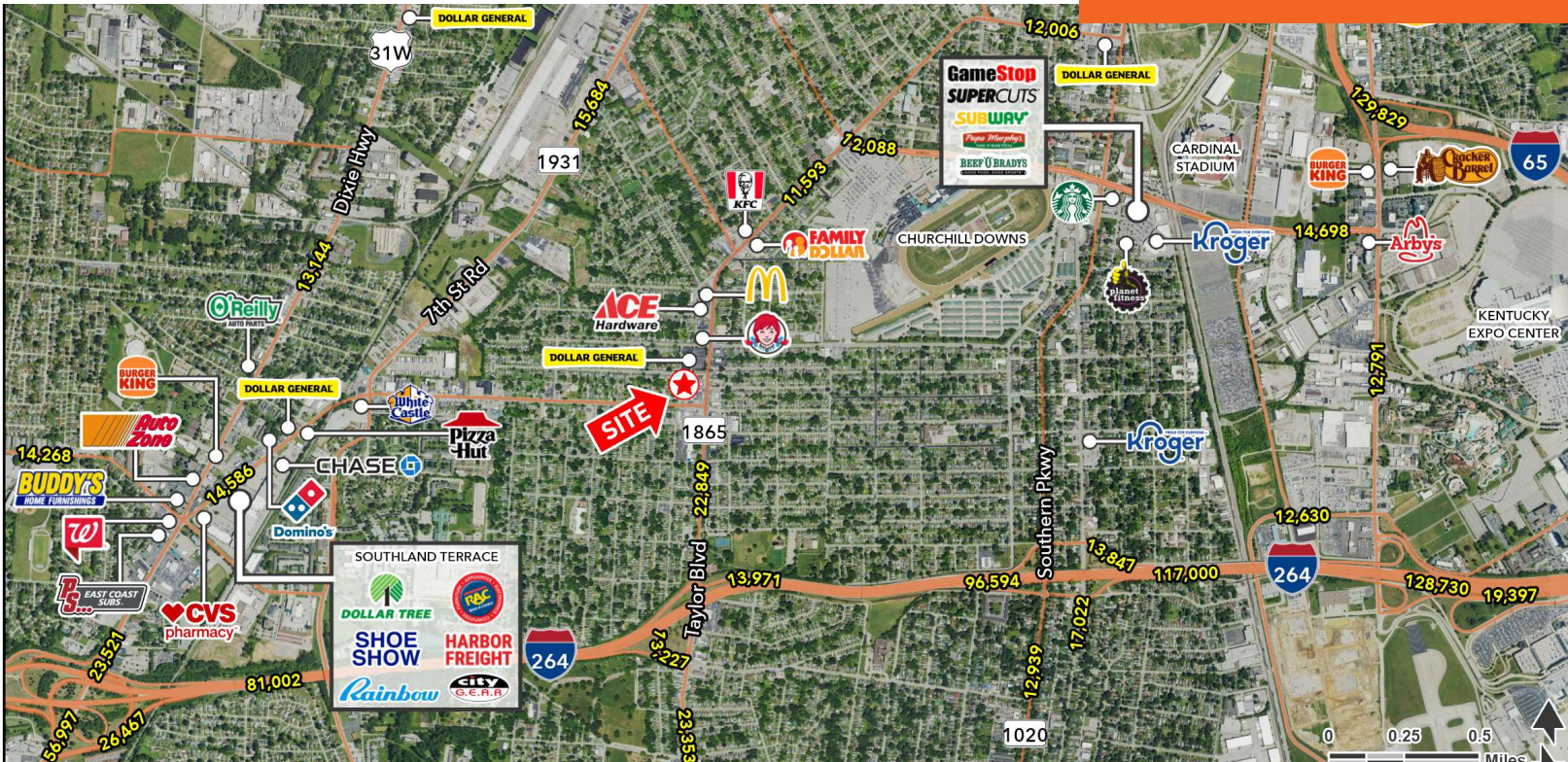


# 3450 TAYLOR BLVD

LOUISVILLE, KY 40215

FOR SALE



## LOCATION DESCRIPTION

6,914 former bank space situated on approximately 0.55 acres. Excellent street visibility and street grade access positioned on corner lot.

## PROPERTY HIGHLIGHTS

- Sale price: \$750,000
- 6,914 SF building on 0.55 acres
- Half mile north of I-264
- Traffic Counts: 11,593 at Taylor Blvd
- Dense residential population



DEMOGRAPHICS	1 MILE	3 MILES	5 MILES
Population	17,183	111,832	246,665
Households	6,691	46,210	104,830
Avg HH Income (\$)	53,621	60,116	67,610



**KEVIN MAYHUGH**

kevin.mayhugh@tscg.com  
502.874.5933

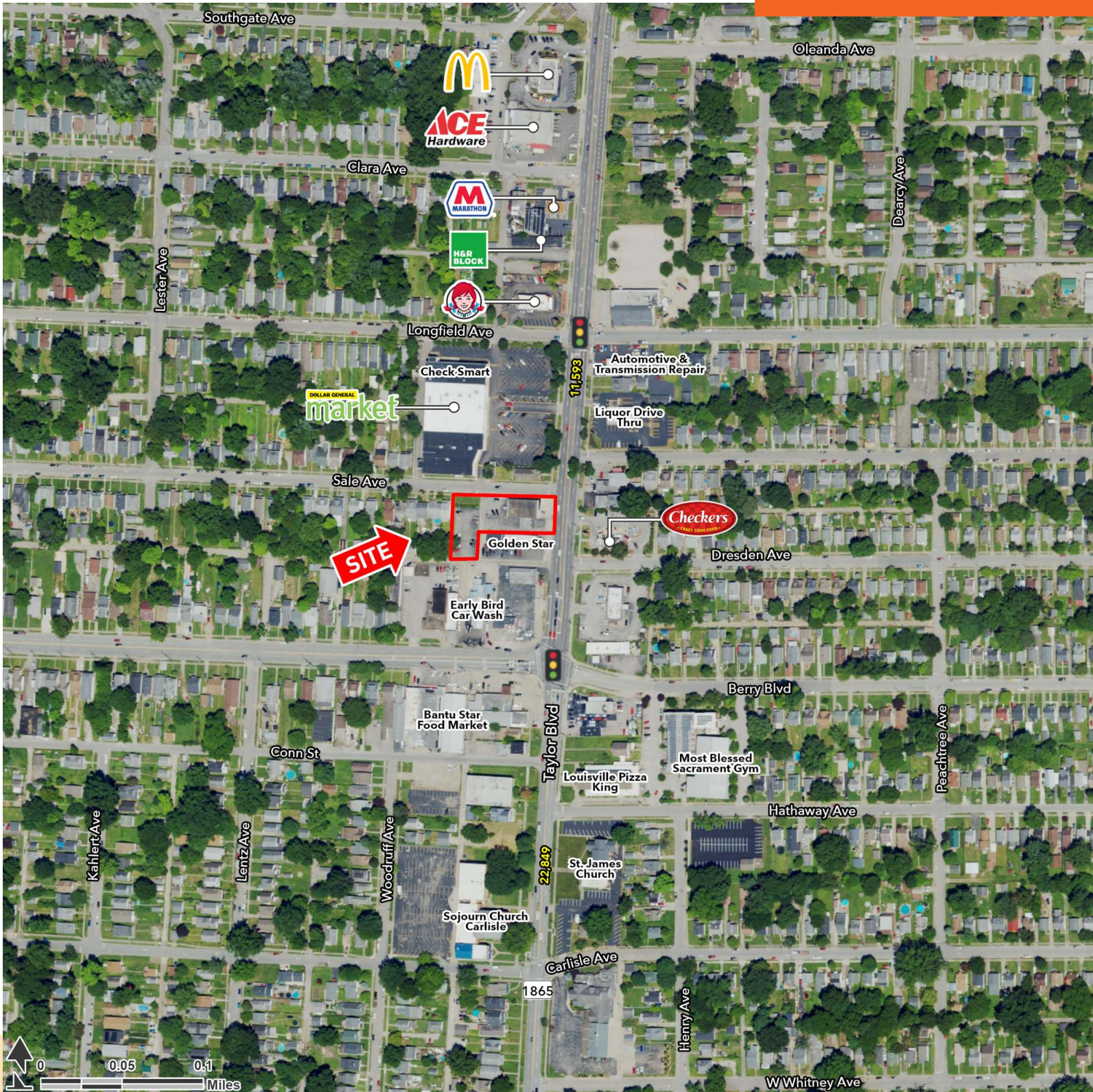
**KEVIN SCHREIBER**

kevin.schreiber@tscg.com  
502.874.5934

# 3450 TAYLOR BLVD

LOUISVILLE, KY 40215

FOR SALE



**KEVIN MAYHUGH**  
kevin.mayhugh@tscg.com  
502.874.5933

**KEVIN SCHREIBER**  
kevin.schreiber@tscg.com  
502.874.5934

# 3450 TAYLOR BLVD

LOUISVILLE, KY 40215

FOR SALE



**KEVIN MAYHUGH**  
kevin.mayhugh@tscg.com  
502.874.5933

**KEVIN SCHREIBER**  
kevin.schreiber@tscg.com  
502.874.5934