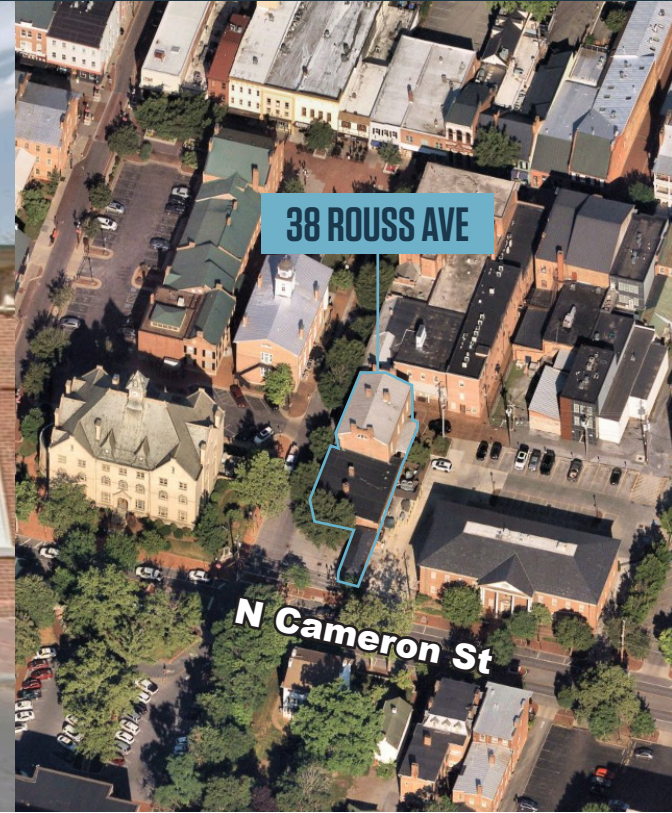




**N Cameron St
(7,491 ADT)**



JOIN THESE RETAILERS



City of
Winchester
Circuit
Court



The Shenandoah Valley
Civil War Museum



FORMER BANK BRANCH AVAILABLE

- Building Size: 7,621 SF
- Finished Basement: 2,208 SF
- Land Area: .27 acres
- Rare .27 acre parcels parcels in downtown Winchester

MATT SKALET

maskalet@klnb.com | 202-420-7775

BEN BECKER

bbecker@klnb.com | 202-420-7773

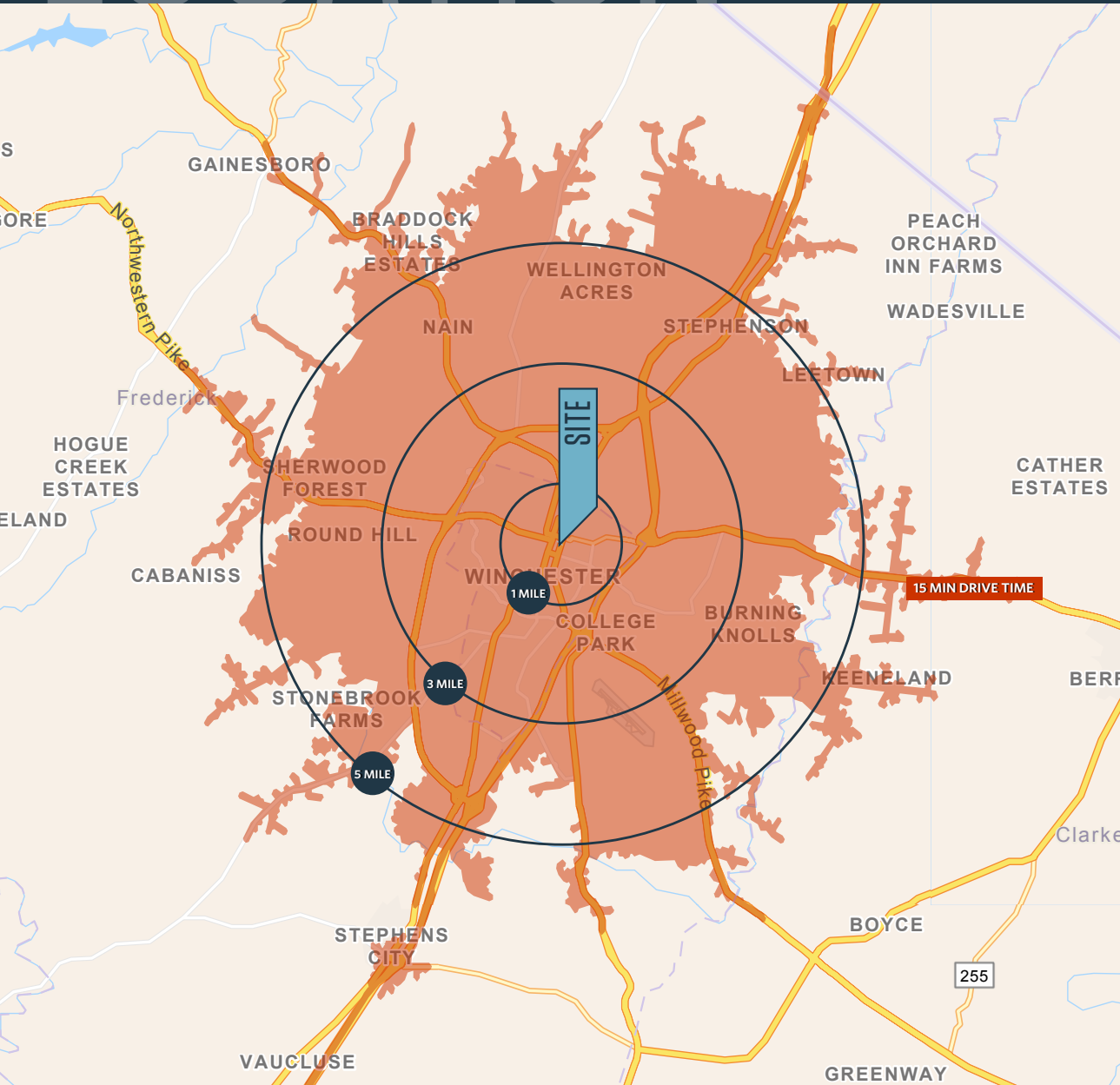
RYAN SCHMITZ

rschmitz@klnb.com | 202-602-1743

LOCATION

38 ROUSS AVE

WINCHESTER, VA 22601, FREDERICK COUNTY



DEMOGRAPHICS | 2023:

	1-MILE	3-MILE	5-MILE	15- MIN DRIVE TIME
Population	13,381	49,324	70,615	73,178
Daytime Population	5,302	43,091	52,226	92,617
Households	5,404	19,097	27,017	28,089
Average HH Income	\$88,117	\$98,454	\$104,024	\$103,797

TRAFFIC COUNTS | 2022:

N Cameron St	7,491 ADT
East Boscawen St	1,525 ADT

MATT SKALET

maskalet@klnb.com | 202-420-7775

BEN BECKER

bbecker@klnb.com | 202-420-7773

RYAN SCHMITZ

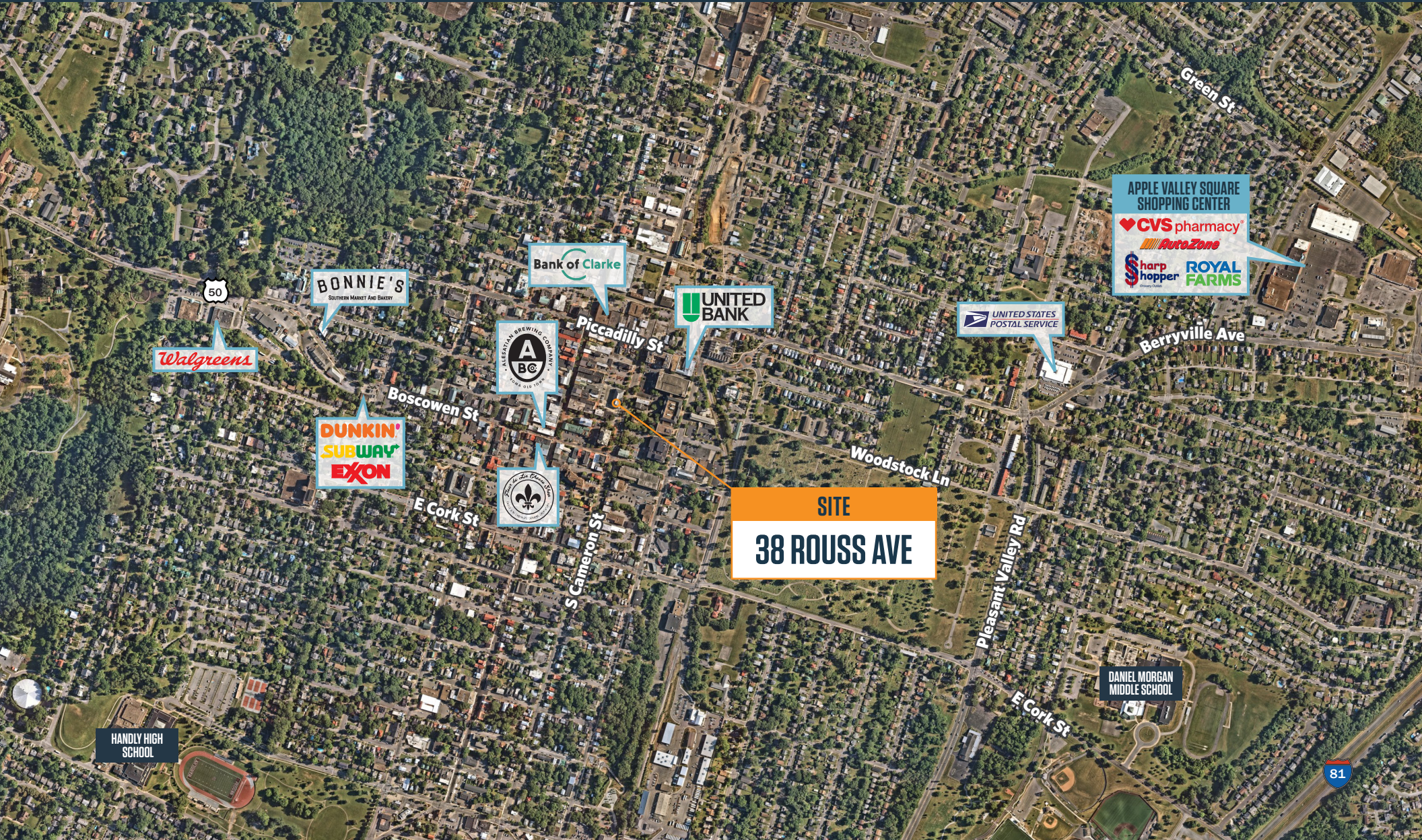
rschmitz@klnb.com | 202-602-1743



AERIAL

38 ROUSS AVE

WINCHESTER, VA 22601, FREDERICK COUNTY



MATT SKALET

maskalet@klnb.com | 202-420-7775

BEN BECKER

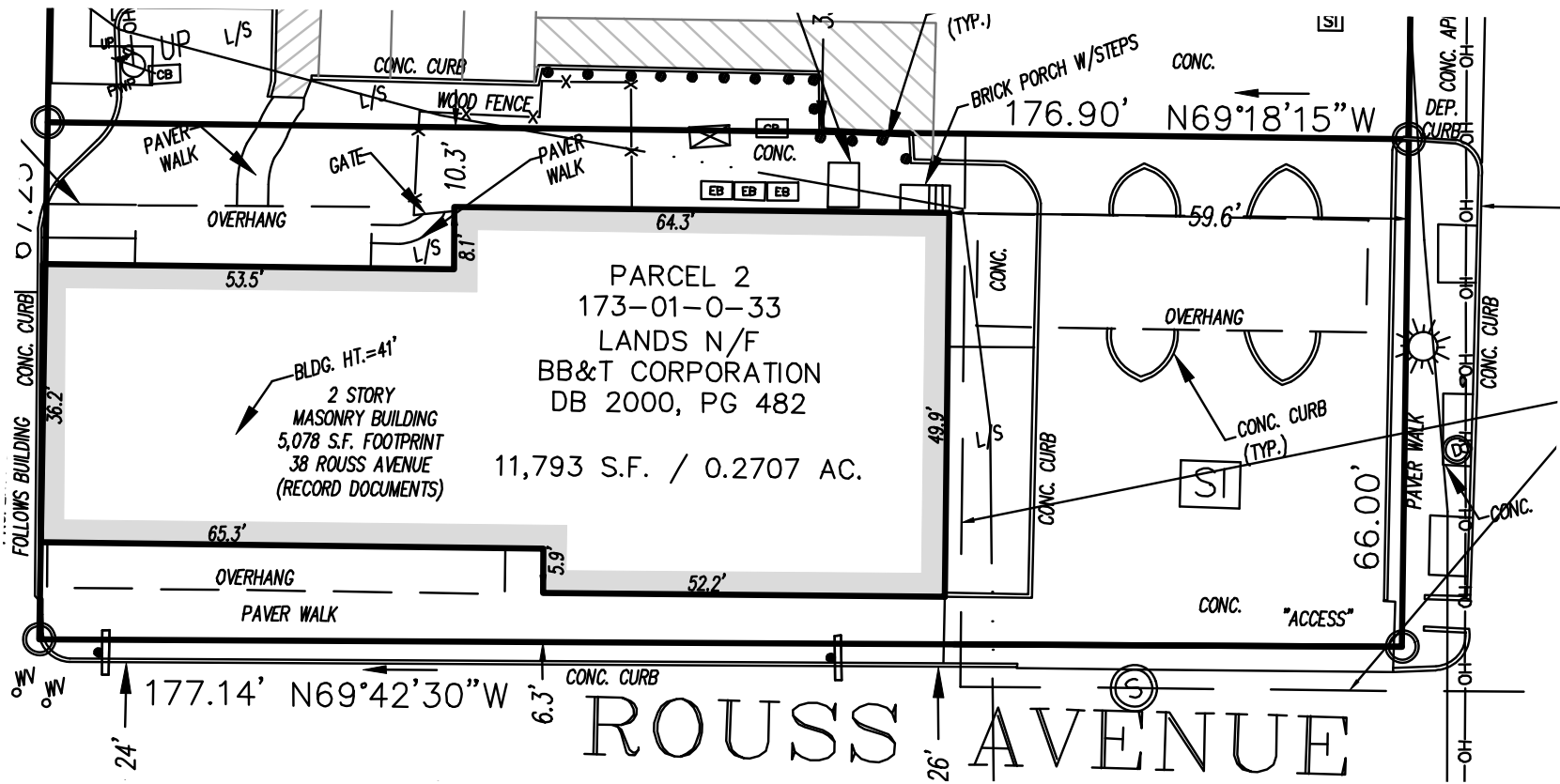
bbecker@klnb.com | 202-420-7773

RYAN SCHMITZ

rschmitz@klnb.com | 202-602-1743



[CLICK HERE TO DOWNLOAD SURVEY](#)





38 ROUSS AVE

WINCHESTER, VA 22601, FREDERICK COUNTY

FOR MORE INFORMATION, PLEASE CONTACT:

MATT SKALET

[mskalet@klnb.com](mailto:maskalet@klnb.com)

202-420-7775

BEN BECKER

bbecker@klnb.com

202-420-7773

RYAN SCHMITZ

rschmitz@klnb.com

202-602-1743

1130 Connecticut Ave, NW, Suite 600, Washington, DC 20036

.....

klnb.com



[instagram.com/klnbcre](https://www.instagram.com/klnbcre)



[linkedin.com/company/klnb](https://www.linkedin.com/company/klnb)



[facebook.com/KLNBCRE](https://www.facebook.com/KLNBCRE)

[CLICK TO VIEW PROPERTY WEBSITE](#)

While we have no reason to doubt the accuracy of any of the information supplied, we cannot, and do not, guarantee its accuracy. All information should be independently verified prior to a purchase or lease of the property. We are not responsible for errors, omissions, misuse, or misinterpretation of information contained herein and make no warranty of any kind, express or implied, with respect to the property or any other matters.