



JOIN THESE RETAILERS



FORMER BANK BRANCH AVAILABLE

- Building Size: 1,997 SF with drive thru lanes
- Land Area: 0.43 Acres
- Large free standing sign
- Highly visible to Oxon Hill Road's 29,630 ADT
- Directly across the street from Rivertowne Commons Marketplace and proximate to National Harbor + Tanger Outlets

MATT SKALET

maskalet@klnb.com | 202-420-7775

BEN BECKER

bbecker@klnb.com | 202-420-7773

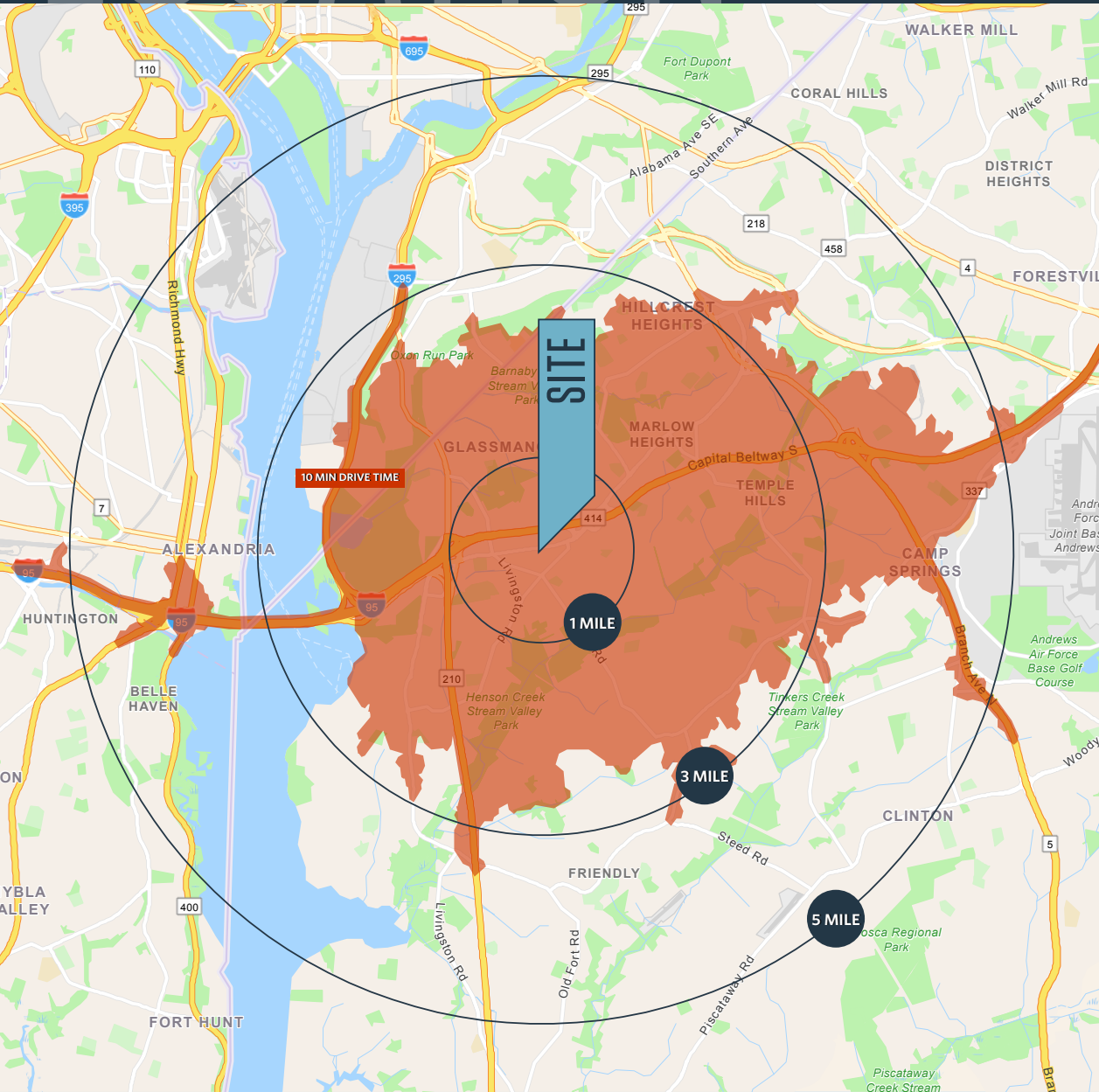
RYAN SCHMITZ

rschmitz@klnb.com | 202-602-1743

LOCATION

6168 OXON HILL ROAD

OXON HILL, MD 20745, PRINCE GEORGE'S COUNTY



DEMOGRAPHICS | 2023:

	1-MILE	3-MILE	5-MILE	10-MIN
Population	15,247	122,682	328,437	190,246
Daytime Population	12,464	113,245	335,048	171,697
Households	5,836	48,596	141,292	80,530
Average HH Income	\$93,431	\$93,654	\$123,869	\$106,958

TRAFFIC COUNTS | 2022:

Oxon Hill Road	29,630 ADT
Capital Beltway	183,327 ADT

MATT SKALET

maskalet@klnb.com | 202-420-7775

BEN BECKER

bbecker@klnb.com | 202-420-7773

RYAN SCHMITZ

rschmitz@klnb.com | 202-602-1743



AERIAL

6168 OXON HILL ROAD

OXON HILL, MD 20745, PRINCE GEORGE'S COUNTY

Oxon Hill
Prince George's County | Maryland

Google Earth Pro Aerial Photograph
While we have no reason to doubt the accuracy of any of the information supplied, we cannot, and do not, guarantee its accuracy.



MATT SKALET
mskalet@klnb.com | 202-420-7775

BEN BECKER
bbecker@klnb.com | 202-420-7773

RYAN SCHMITZ
rschmitz@klnb.com | 202-602-1743

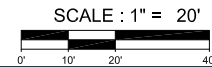
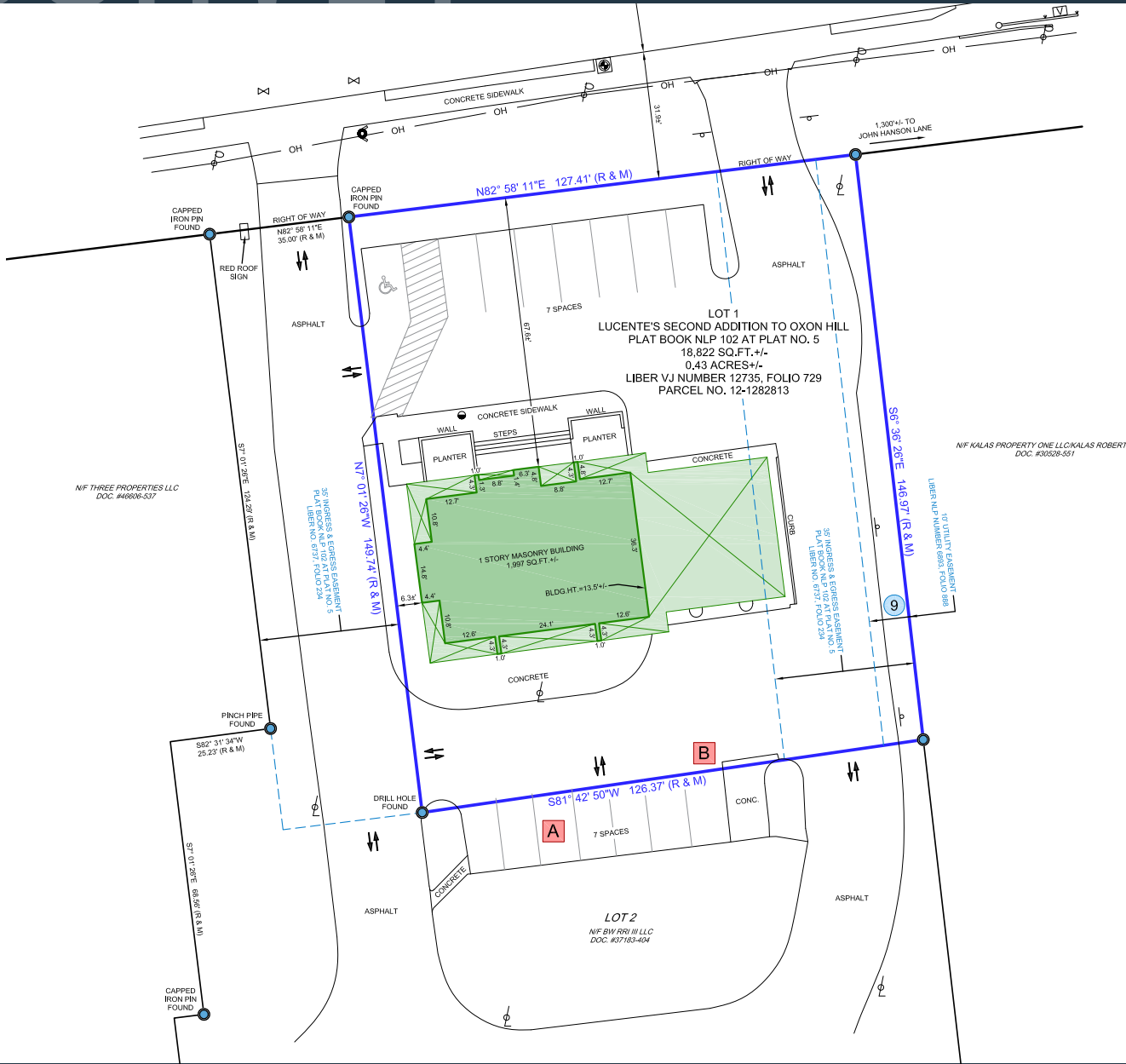


SURVEY

6168 OXON HILL ROAD

OXON HILL, MD 20745, PRINCE GEORGE'S COUNTY

[CLICK HERE TO DOWNLOAD SURVEY](#)



MATT SKALET
mskalet@klnb.com | 202-420-7775

BEN BECKER
bbecker@klnb.com | 202-420-7773

RYAN SCHMITZ
rschmitz@klnb.com | 202-602-1743





6168 OXON HILL ROAD

OXON HILL, MD 20745, PRINCE GEORGE'S COUNTY

FOR MORE INFORMATION, PLEASE CONTACT:

MATT SKALET

[mskalet@klnb.com](mailto:maskalet@klnb.com)

202-420-7775

BEN BECKER

bbecker@klnb.com

202-420-7773

RYAN SCHMITZ

rschmitz@klnb.com

202-602-1743

1130 Connecticut Ave, NW, Suite 600, Washington, DC 20036

.....

klnb.com



[instagram.com/klnbcre](https://www.instagram.com/klnbcre)



[linkedin.com/company/klnb](https://www.linkedin.com/company/klnb)



[facebook.com/KLNBCRE](https://www.facebook.com/KLNBCRE)

[CLICK TO VIEW PROPERTY WEBSITE](#)

While we have no reason to doubt the accuracy of any of the information supplied, we cannot, and do not, guarantee its accuracy. All information should be independently verified prior to a purchase or lease of the property. We are not responsible for errors, omissions, misuse, or misinterpretation of information contained herein and make no warranty of any kind, express or implied, with respect to the property or any other matters.