



## JOIN THESE RETAILERS



## FORMER BANK BRANCH AVAILABLE

- Building Size: 4,706 SF with drive thru lanes  
1st Floor: 2,487 SF | 2nd Floor: 2,219 SF  
(3 story, approximately 2,400 SF a level.)
- Land Area: 0.27 Acres
- Located at traffic signaled intersection
- Abundant street parking
- Rare corner parcel in vibrant Baltimore City

**MATT SKALET**

maskalet@klnb.com | 202-420-7775

**BEN BECKER**

bbecker@klnb.com | 202-420-7773

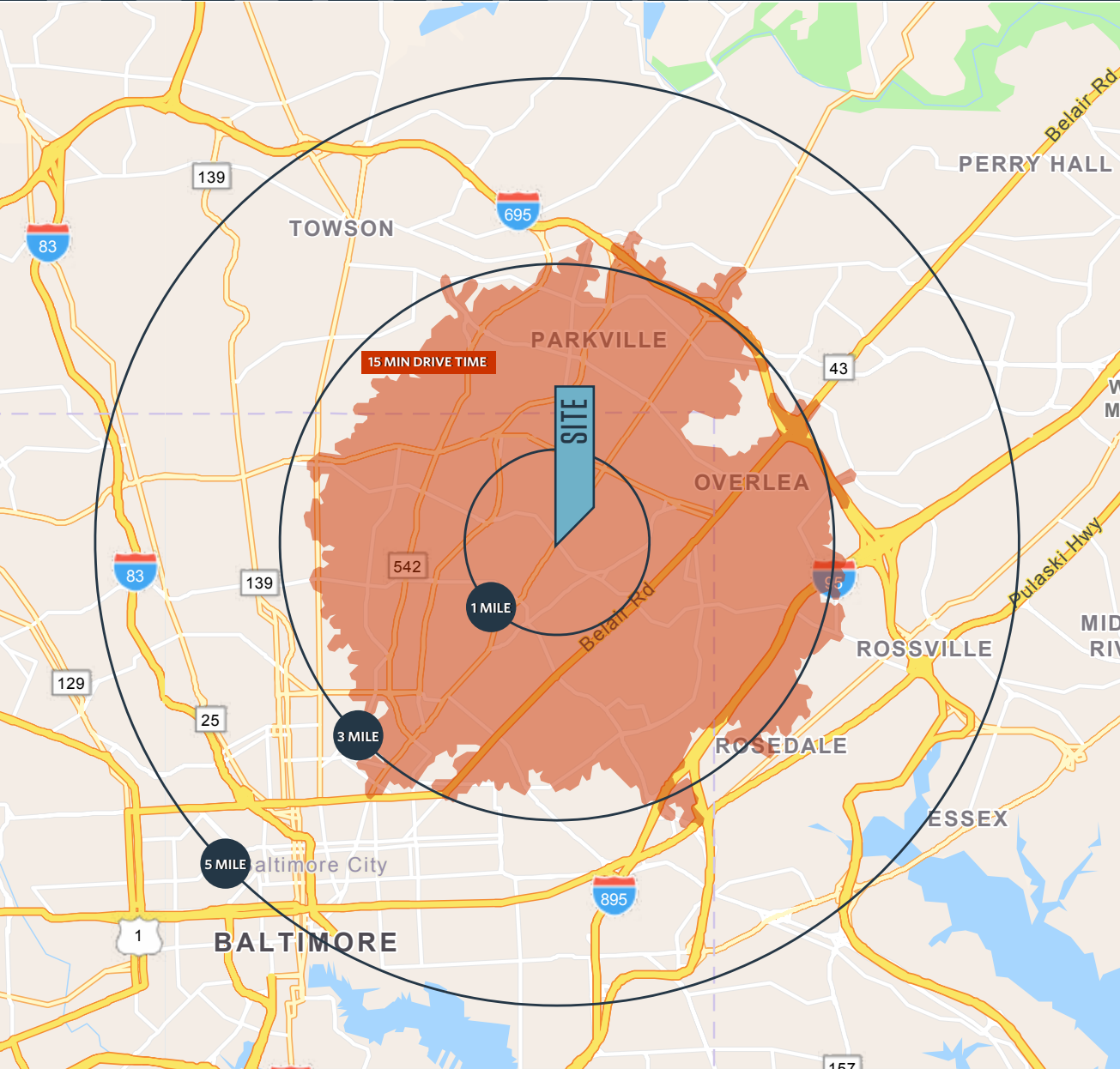
**RYAN SCHMITZ**

rschmitz@klnb.com | 202-602-1743

# LOCATION

# 5439 HARFORD ROAD

BALTIMORE, MD 21214, BALTIMORE CITY



## DEMOGRAPHICS | 2023:

|                    | 1-MILE   | 3-MILE   | 5-MILE    | 10-MIN DRIVE TIME |
|--------------------|----------|----------|-----------|-------------------|
| Population         | 21,300   | 202,423  | 491,984   | 183,680           |
| Daytime Population | 15,026   | 146,859  | 507,309   | 131,165           |
| Households         | 8,631    | 83,074   | 206,459   | 75,099            |
| Average HH Income  | \$98,166 | \$88,262 | \$100,407 | \$85,010          |

## TRAFFIC COUNTS | 2022:

|                 |            |
|-----------------|------------|
| Harford Road    | 11,927 ADT |
| Hamilton Avenue | 7,399 ADT  |
| Echodale Avenue | 10,330 ADT |

**MATT SKALET**

maskalet@klnb.com | 202-420-7775

**BEN BECKER**

bbecker@klnb.com | 202-420-7773

**RYAN SCHMITZ**

rschmitz@klnb.com | 202-602-1743

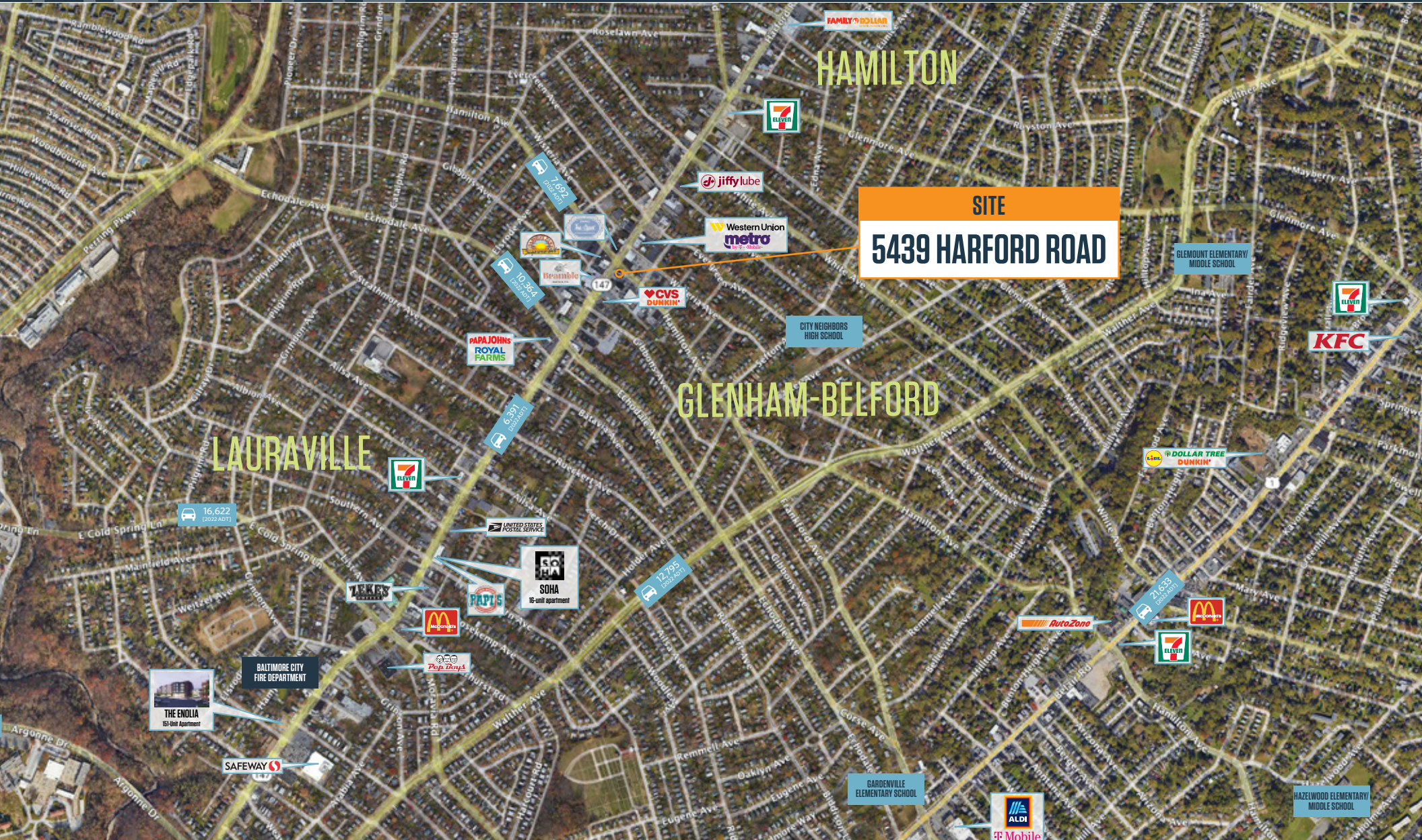




# AERIAL

# 5439 HARFORD ROAD

BALTIMORE, MD 21214, BALTIMORE CITY



**MATT SKALET**

maskalet@klnb.com | 202-420-7775

**BEN BECKER**

bbecker@klnb.com | 202-420-7773

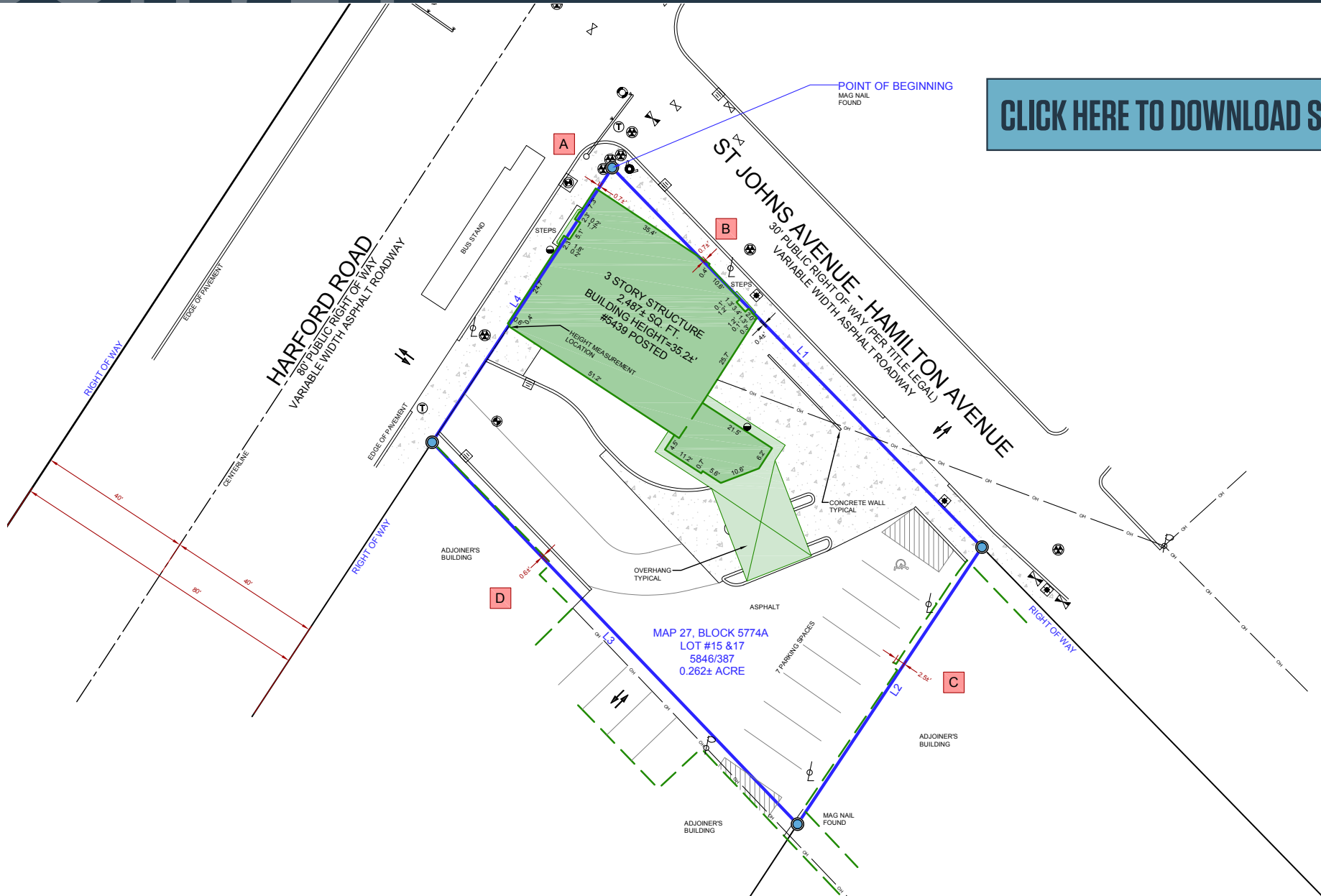
**RYAN SCHMITZ**

rschmitz@klnb.com | 202-602-1743





[CLICK HERE TO DOWNLOAD SURVEY](#)





# 5439 HARFORD ROAD

BALTIMORE, MD 21214, BALTIMORE CITY

## FOR MORE INFORMATION, PLEASE CONTACT:

### MATT SKALET

maskalet@klnb.com  
202-420-7775

### BEN BECKER

bbecker@klnb.com  
202-420-7773

### RYAN SCHMITZ

rschmitz@klnb.com  
202-602-1743

1130 Connecticut Ave, NW, Suite 600, Washington, DC 20036

.....

## klnb.com



instagram.com/klnbcre



linkedin.com/company/klnb



facebook.com/KLNBCRE

**CLICK TO VIEW PROPERTY WEBSITE**

While we have no reason to doubt the accuracy of any of the information supplied, we cannot, and do not, guarantee its accuracy. All information should be independently verified prior to a purchase or lease of the property. We are not responsible for errors, omissions, misuse, or misinterpretation of information contained herein and make no warranty of any kind, express or implied, with respect to the property or any other matters.